

Mobile Barriers MBT-1

"Improving Safety, Efficiency & Traffic Flows In & Around Work Zones"



MOBILE BARRIERS

www.mobilebarriers.com
303-526-5995

IRF
2012

ARTBA
2012

2009 BETTER Roads TOP ROLLOUT

WINNER
2009 ATSSA INNOVATION AWARD

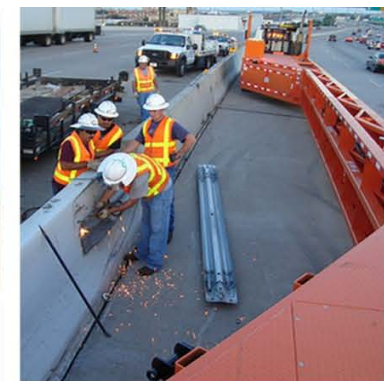


Highly Mobile Protection

Taller (5')

Longer (42-102')

More Efficient (*modular & easy to maintain*)



MOBILE BARRIERS MBT-1 is protected under Pat. Nos. 7,572,022, 7,901,117 and other patents pending. MOBILE BARRIERS & Design is a Registered Trademark. © 2007-2012 Mobile Barriers LLC. All rights reserved.



Onboard:

Power (240, 120, Solar & 12/24V)

Lights (*shine where needed*)

Storage (*lockable & on-deck storage for materials and supplies*)
& **Other Options** (*including Rear Steer*)





Protection

- front
- back
- sideways

Less Collateral Equipment

Fewer People Outside
Protected Area
(*Safer/More Productive*)

Better Lighting
Less Fatigue



Improve Traffic Flows:

**Reduce Number & Duration
of Lane Closures**

Reduce Glare & Distraction

Allow Traffic to Pass at Speed

Reduce Secondary Incidents







Pays for Itself in 2 yrs (w/ 10-15 lane closures per month saving \$1000 per closure)

Life Cycle Cost = \$15,000/yr w/ 20 yr life

Rentals & Leases also available

Additional Benefits

Safety, Efficiency & Traffic Flows

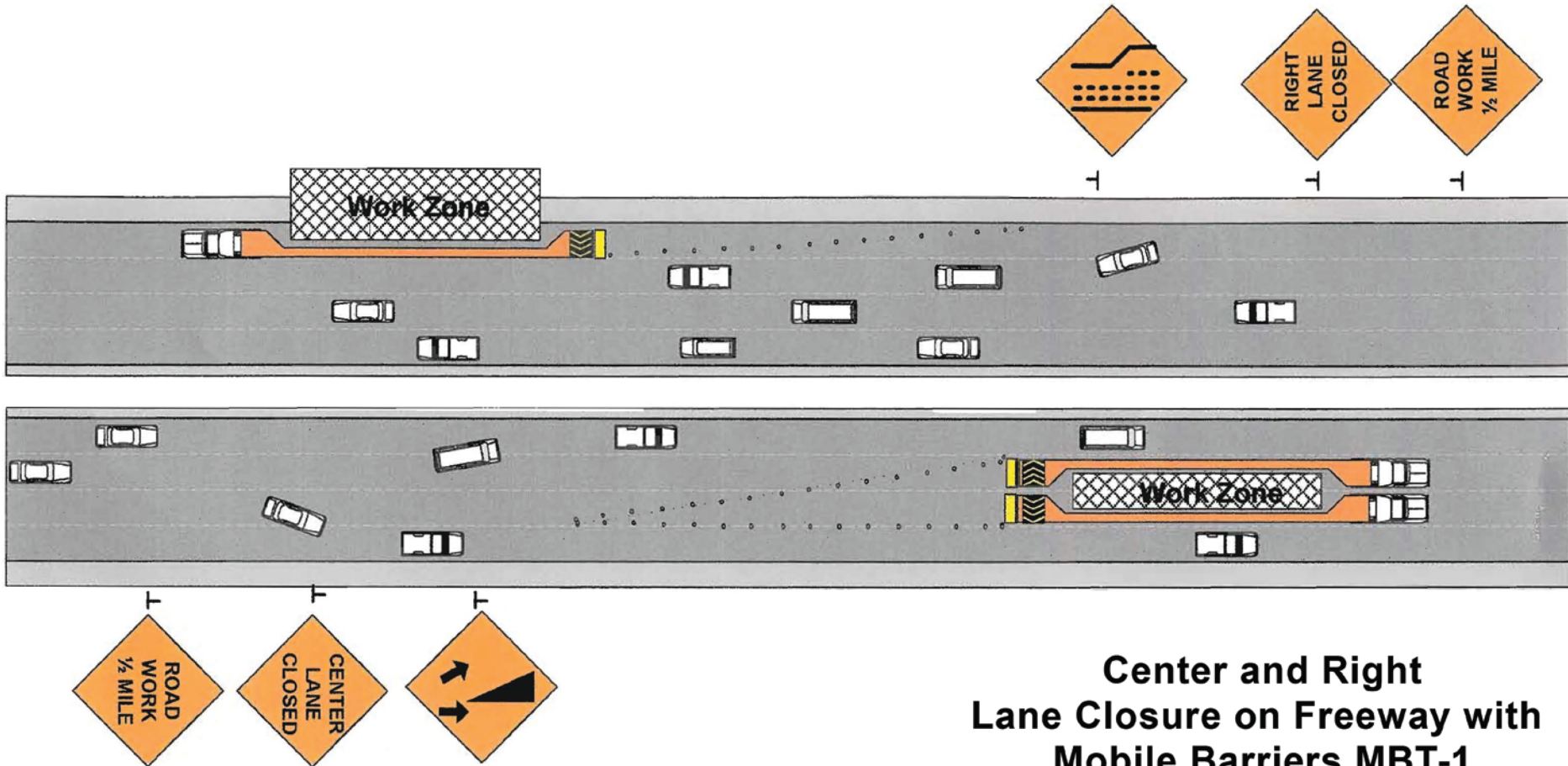
- *Safer – for Workers & Traveling Public*
- *Less Collateral Equipment*
- *Less Traffic Disruption*

“minimizing the extent and duration of disruption”

Modular (repair/replace only what's damaged when damaged)

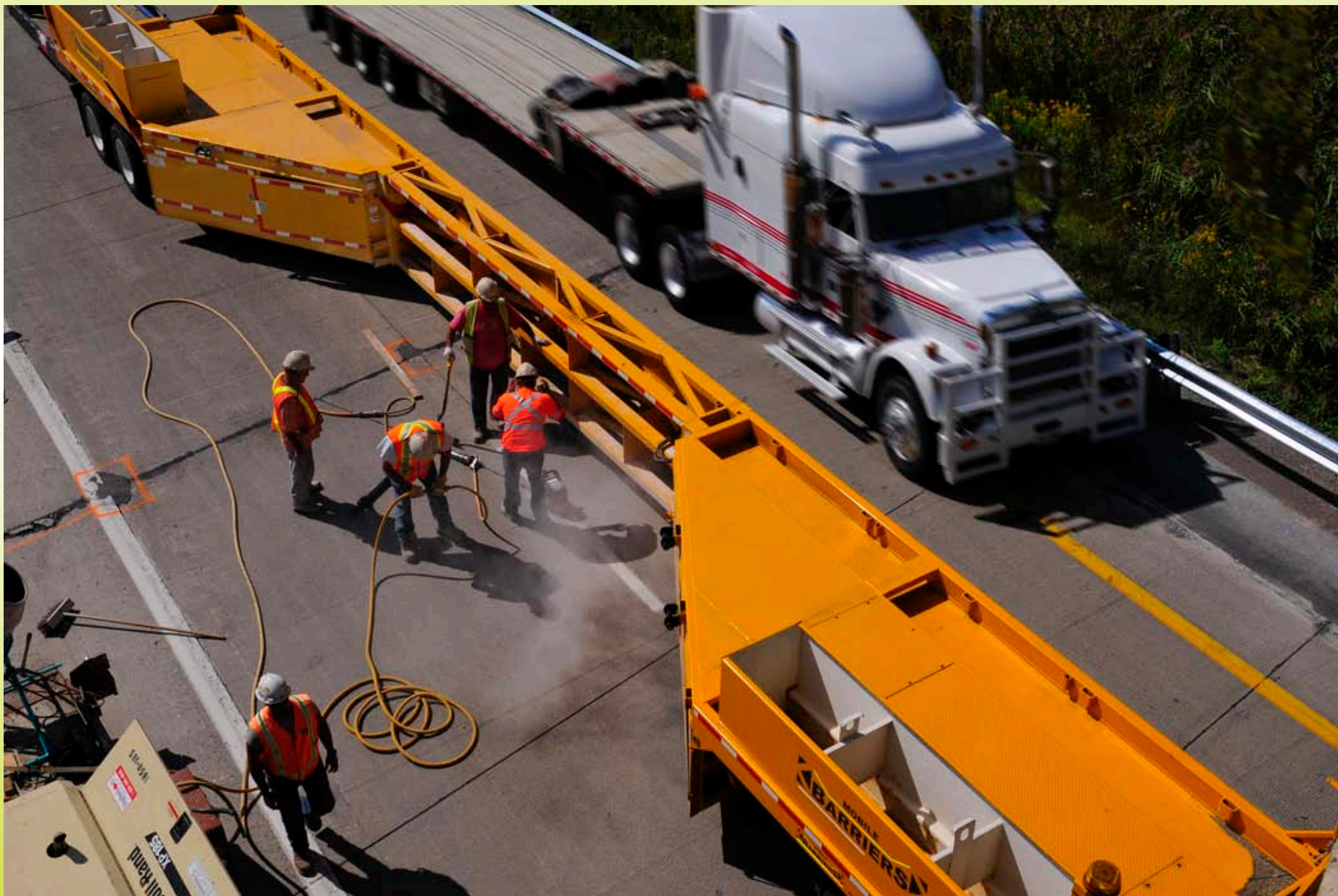
Traffic Can Pass At Speed

(on either side if necessary)



**Center and Right
Lane Closure on Freeway with
Mobile Barriers MBT-1**





Traffic Can't See In *Crews Can Still See Out*



Work Comfortably in Dense Traffic





Texas

(end treatment repairs)



Texas

(median barrier repair)



(protected work zone - traffic passing at speed)



Texas

(2 lanes closed w/ traditional setup ... 0 lanes closed w/ MBT-1)



North Texas Tollway (NTTA)
(multiple barrier used daily)



New York (Staten Island)



IMPACT
ABSORPTION

New York

(Bridge Rail Replacement)



New York

(more bridge work)



New Jersey (road cut/repair)





Denver Metro - Night Work

(bridge approach)



Denver Metro - Night Work

(traffic passing at speed)



Denver Metro – More Night Work *(traffic passing at speed)*



Colorado

(work area well lit – traffic passes via headlights)



Colorado

(work area well lit – traffic passes via headlights)



Emergency Bridge Repairs (truck hit)



Emergency Bridge Repairs *(truck hit)*



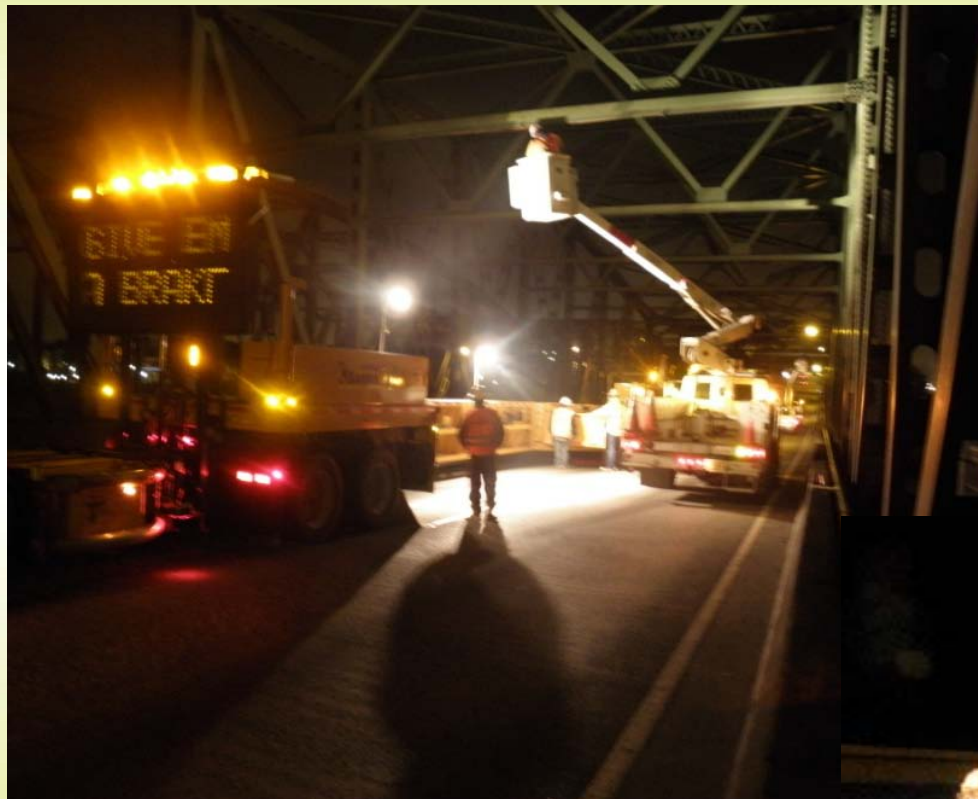
Oregon

(bridge joint work)



Oregon & Colorado

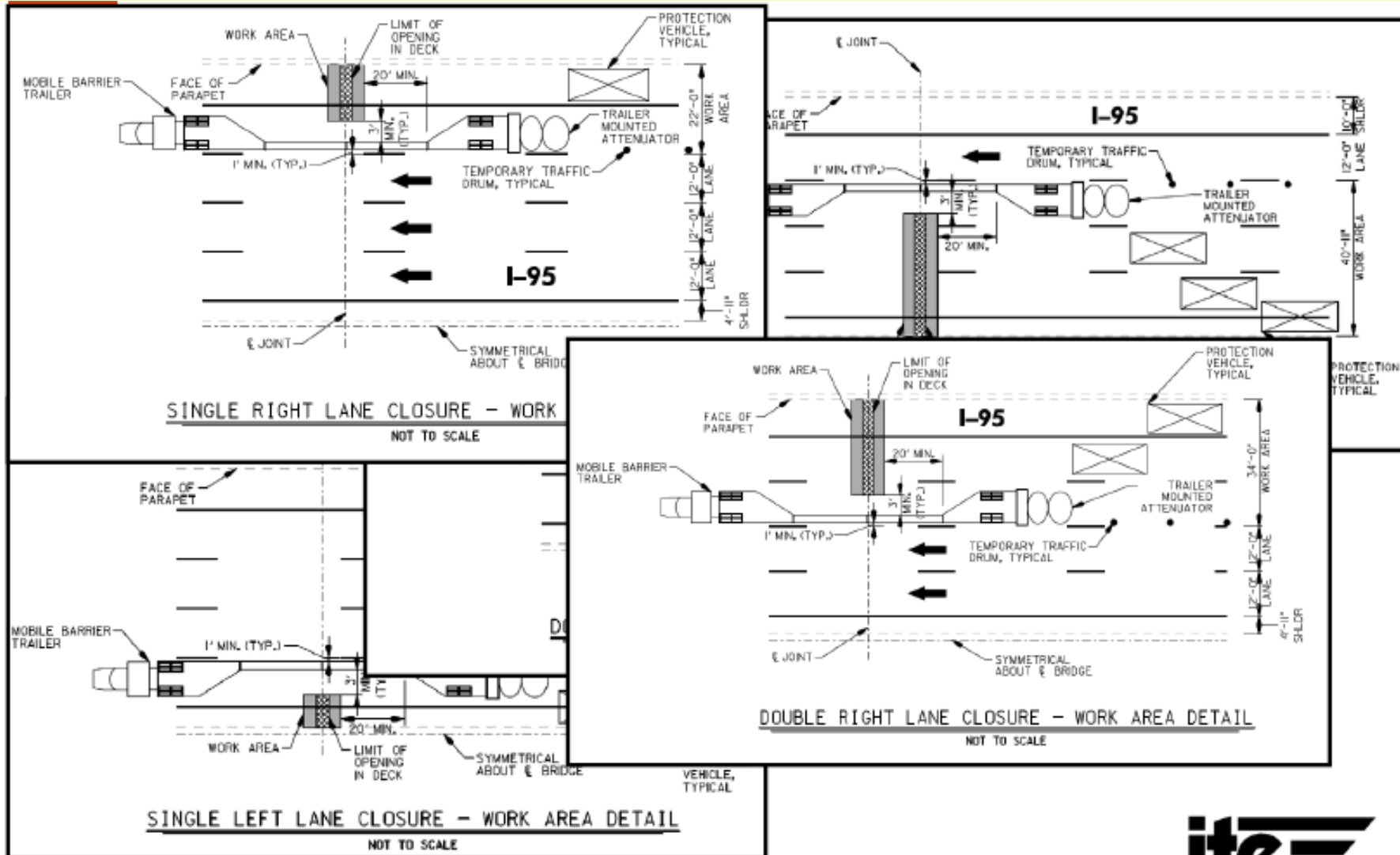
(more bridge and approach work)



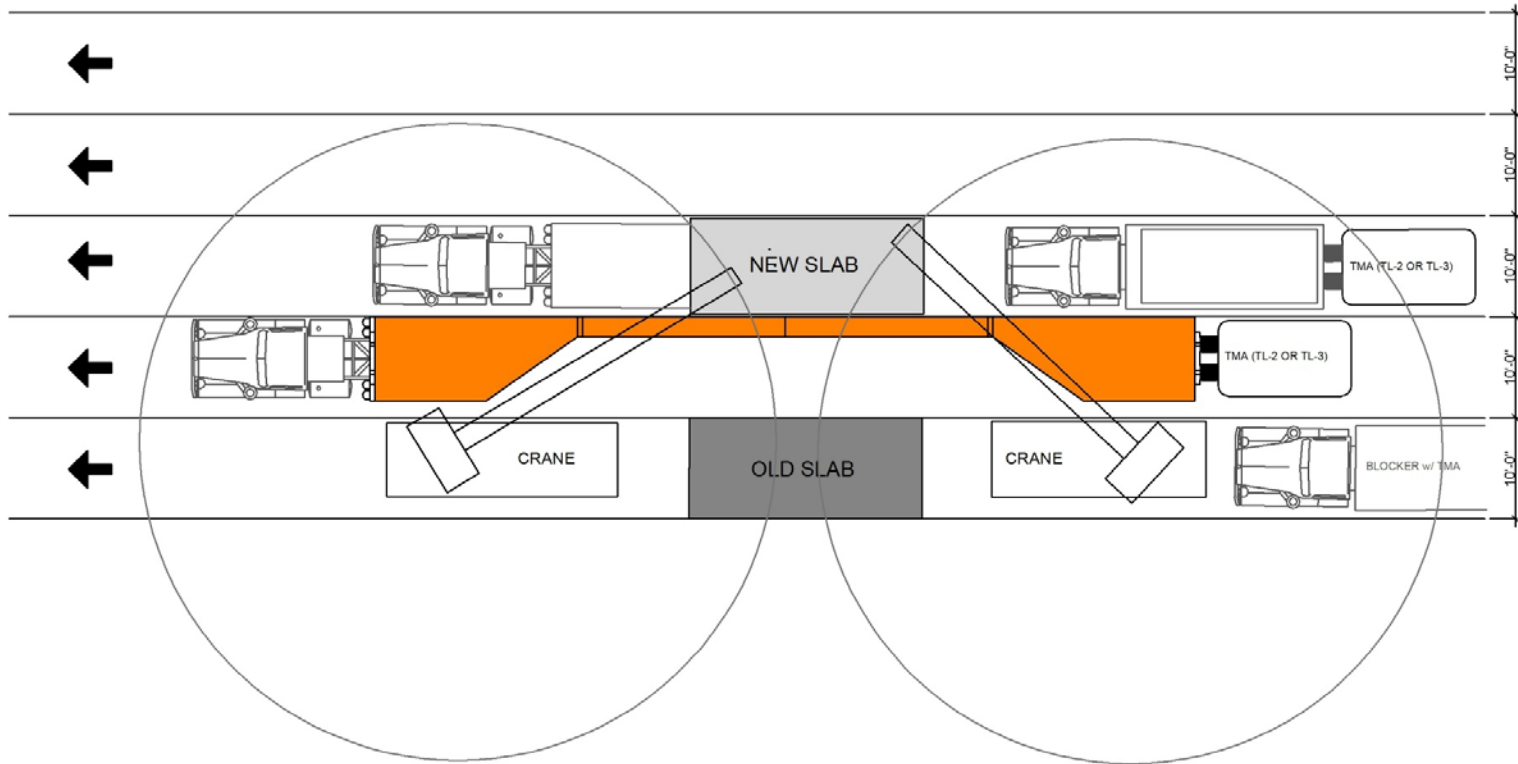
Maryland

Bridge Joint Modification Project

(57 bridges/64 deteriorated joints)



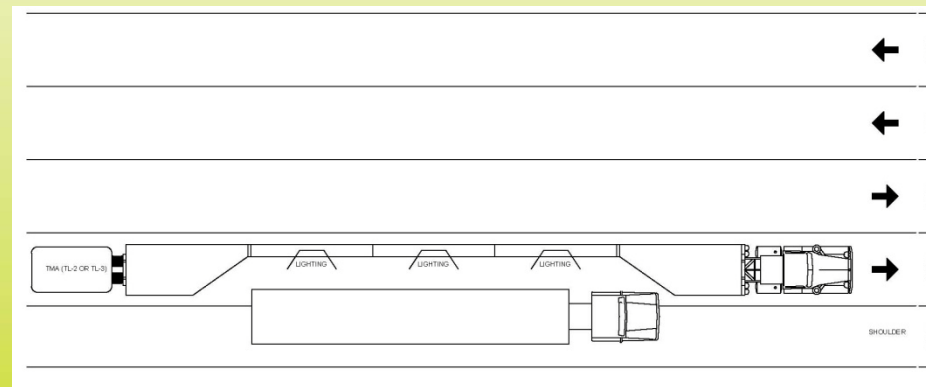
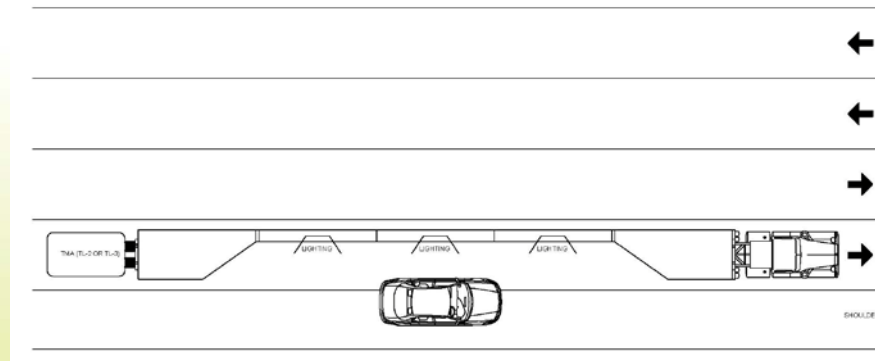
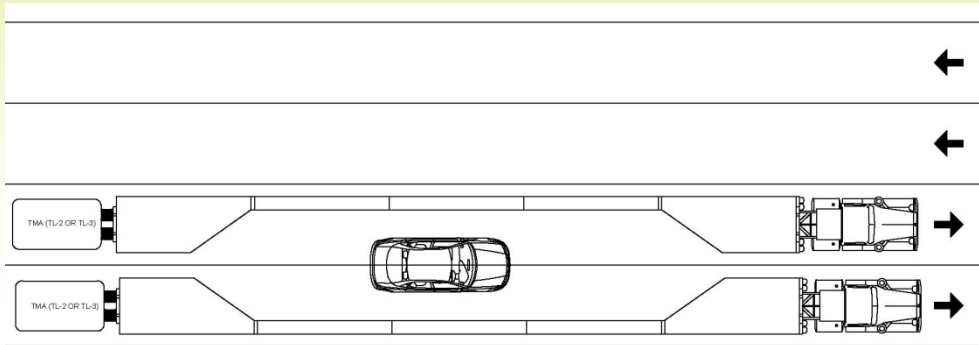
Accelerated Bridge Program (pre-cast slab replacement)



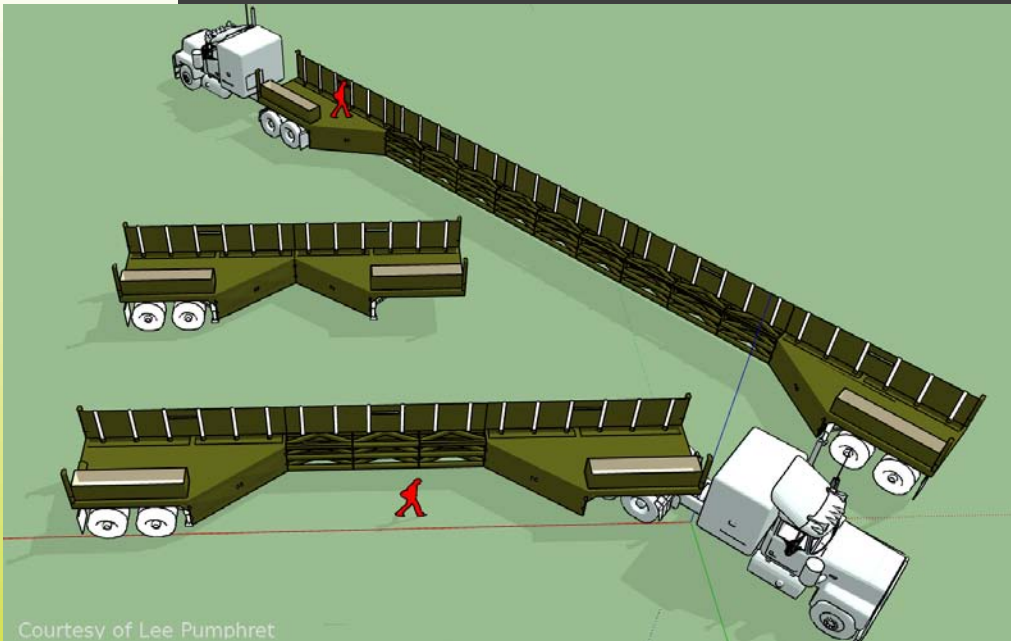
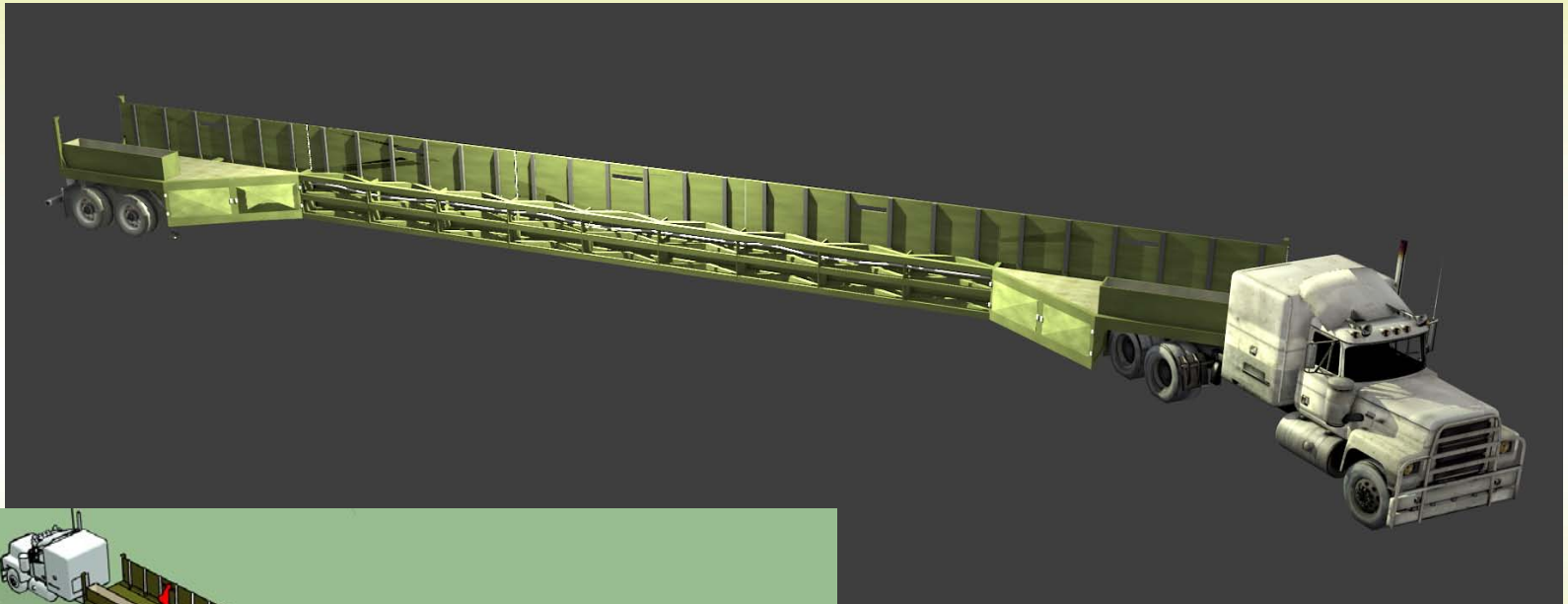
MOBILE BARRIER TRAILER MBT-1

Sheet No	Date:	Scale:
1 of 1	1/17/11	1/16"=1'-0"

Incident Management & Mobile Inspections



Incident Management & Mobile Inspections



Courtesy of Lee Pumphret

Incident Management & Mobile Inspections



Texas

Full Road Closure for ITS Cut

(stopped wrong way driver – last defense after barricades & police strips failed)



Mobile Barriers MBT-1... in the Real World

Hit by 2 Semi Trucks

Minor damage (one drove on/one stopped)



Photo courtesy of ODOT, Nicholas Tymvios



Mobile Barriers MBT-1



Mobile Barriers LLC | Denver Offices: 24918 Genesee Trail Road | Golden, Colorado 80401 | Phone 303-526-5995 | Fax 303-526-9959

For additional information see

www.mobilebarriers.com